

Contoocook & North Branch Rivers
Management Plan

Hancock

- County Boundary
 - Town Boundary
 - Community Center Areas
 - Lakes and Ponds
 - Rivers and Streams
 - Wetlands
 - Active Dams
 - Bridges
 - Conservation Lands
- Floodplains**
- Floodway
 - 1% Annual Flood Risk
 - 0.2% Annual Flood Risk

Data sources: 1:24,000 source data from NH GRANIT; flood data from FEMA through NH GRANIT; Road and bridge data from NH Dept. of Transportation; Dams data from NH Dept. of Environmental Services.

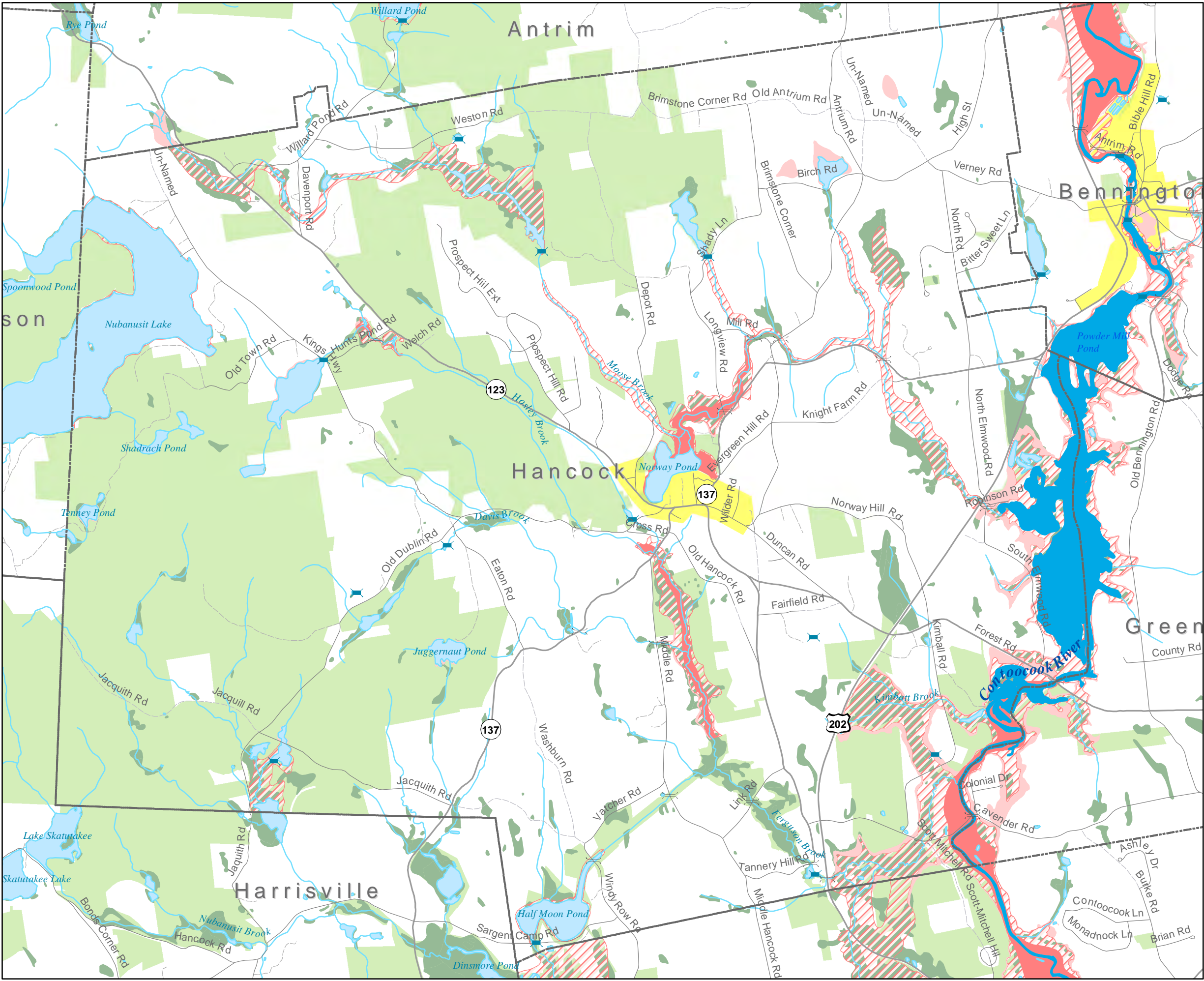
This map is for planning purposes only. Neither CNHRPC nor CNBRLAC make any representations as to the accuracy or validity of these data, and this map should not be used for regulatory or site specific determinations. Map created in November 2009 by CNHRPC.



Funding provided by the NH Department of Environmental Services through Section 604(b) of the Clean Water Act with funds appropriated by the American Recovery and Reinvestment Act of 2009.

New Hampshire
Department of
Environmental
Services
29 Hazen Drive Concord NH 03301

Central New Hampshire
Regional Planning Commission
28 Commercial Street
Concord, NH 03301
603.226.6020
www.cnhrpc.org



 Highest Ranked Habitat in Biological Region

 Supporting Landscapes (*of regional significance*)

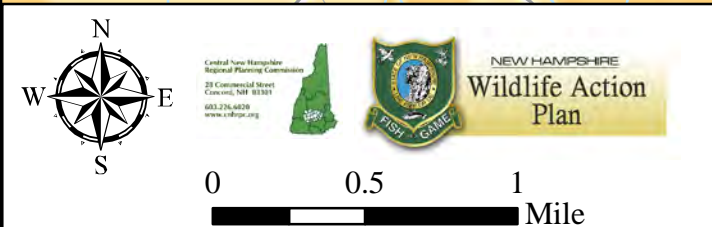
☐ Developed land cover

 Conservation or public land

- Information about habitat condition was analyzed to develop a statewide and regional ranking and identify the highest quality habitat relative to all polygons of a given habitat type in the state.
- The goal is to provide regional planners and conservation professionals a tool in identifying the most critical wildlife habitat locations.
- Results will be re-evaluated to monitor the effectiveness of conservation actions and respond appropriately to new information or changing conditions.

Please refer to accompanying documents describing habitat condition/scoring.

A map of Harrisville, Vermont, showing the locations of Childs Bog and Nubanusit Brook Reservoir. The map features a light blue background with a network of roads and water bodies. Childs Bog is a large, irregularly shaped area on the left side, outlined in black and filled with a light blue color. Nubanusit Brook Reservoir is a large, irregularly shaped area in the center, outlined in black and filled with a light blue color. Several smaller, irregularly shaped areas are outlined in black and filled with a light blue color, representing other wetlands or bogs. The word "Harrisville" is written in a large, black, serif font at the bottom center of the map. The word "Childs Bog" is written in a smaller, black, serif font above the bog. The words "Nubanusit Brook Reservoir" are written in a smaller, black, serif font above the reservoir.



NHFGD February 2007 Conservation data updated 2009

Contoocook & North Branch Rivers
Management Plan

Zoning
in Hancock

Legend
Hancock Zoning

- Agricultural & Rural District
- Commercial District
- Residential District

Data sources: Hydrography 1:24,000
source data from NH GRANIT; Roads data
from NH Dept. of Transportation; Zoning
layers from CNHRPC, SWRPC, and towns.

This map is for planning purposes only.
Neither CNHRPC nor CNBRLAC make any
representations as to the accuracy or
validity of these data, and this map should
not be used for regulatory or site specific
determinations. Map created in November
2009 by CNHRPC.



Funding provided by the NH Department of
Environmental Services through Section 604(b) of
the Clean Water Act with funds appropriated by the
American Recovery and Reinvestment Act of 2009.

New Hampshire
Department of
Environmental
Services
29 Hazen Drive Concord NH 03301

Central New Hampshire
Regional Planning Commission
28 Commercial Street
Concord, NH 03301
603.226.6020
www.cnhrpc.org

